

Computing @ The College of Charleston

computerinfo@CofC.edu

<http://blogs.cofc.edu/scs>

Want To \$ave Money?

- Purchase computers and other eligible items during the SC Sales Tax Holiday, 6-8 August
- Not necessary to be a SC resident to qualify *
- A list of eligible items and Q&A available at www.sctax.org under “What’s New”
- Many items at our Bookstore qualify

* If delivered to SC or official CofC mailing address

Want To \$ave Money?

POTENTIAL SAVINGS FOR MILITARY PERSONNEL/DEPENDENTS

Dell, Apple and other computer brands including HP can be purchased through the Military Exchange online catalog at www.aafes.com. Use our recommended laptop features as a guide and compare the pricing in order to get the best deal possible. In addition, the Exchange system has preferred vendor relationships with Books A Million, and other companies selling merchandise needed by college-bound students. Enter the web sites of these vendors through the Exchange online and you can purchase computers, school supplies, electronics, textbooks, linens, etc at reduced prices and no sales taxes. Shipping is free when you use the Military Star credit card to make your purchase. Normally, free shipping applies to other credit cards if the purchase exceeds \$49. You owe it to yourselves to check out qualifying vendors and compare pricing.

Basic Services

- **Personal E-mail accounts (Edisto)***
- **Computers, scanners and laser printers**
- **Application and antivirus software**
- **High-speed Internet access**
- **Extensive Information Resources**

* Comes with Junk Mail filtering

CampusWide Wireless Network*

- Laptop Computers, iPhones, etc.
- Not an alternative to *ResNet*
- <http://it.cofc.edu/network/wireless>
- Automatic setup procedure at <http://wireless@cofc.edu/>

* Access from a wired residence or nearby apartment is not impossible, but highly improbable.

Addlestone Library Computer Lab

- **66 PCs in Reference (12 public stations)**
- **50 PCs in two lab classrooms**
- **130 PCs in main lab (149 new PCs)**
- **10 Wireless laptops for loans***
- **2 Scanners and 7 laser printers**
- **1 Color printer/copier**

* restricted to library; cannot print; available at Circulation Desk

Hours of Operation

Addlestone Library Student Computing Center

Monday - Thursday	7:30 am - 2:00 am
Friday	7:30 am - 8:00 pm
Saturday	10:00 am - 8:00 pm
Sunday	10:00 am - 2:00 am
Student Support Desk (Mon-Fri)	8:00 am - 5:00 pm

(Expanded hours during Mid-term and Final Exam periods. See library web page for details. Only students June use library from midnight to 2:00 a.m. You must have a valid CofC ID card to be admitted.)

Specialized Software

- **Software required for a specific course or project (e.g. dietary or statistical analysis)**
- **Miscellaneous programs for web pages, photo editing, music composition (Finale), desktop publishing, etc.**
- **Available on selected PCs in the Addlestone Computer Lab (inquire at Student Support Desk)**

Printing Policy

- **Students allowed 300 free pages per semester; additional printing is 5-cents per page payable with your Cougar Card**
- **Color printing/copying available @ 35-cents per sheet (not included in allowance)**

Cougar ResNet

- **Free, high-speed Internet service available in all residence buildings 24-7**
- **Provided by Campus Technologies**
- **Personal wireless network or Internet access is prohibited (service will be suspended)**

Wired

Berry Hall
Buist & Rutledge Rivers
Craig Union
Liberty
George St. Apts.
McAlister Hall
McConnell Hall
New Craig
Warren Place
90, 99-107 Wentworth

Wireless*

College Lodge
28, 32-38 Coming
Kelly House
Historical Houses

* Desktop computers will
need a wireless card or device
for *ResNet* access

Other Services

- Limited diagnostics and maintenance for laptop users
- Dell discount computer purchases (basic education discount for Apple computers)
- Discounted software purchases through above vendors and the CofC bookstore

Other Services

- Technology information & downloads on Student Computing Support blog at <http://blogs.cofc.edu/scs/>
- Basic school supplies and data storage media available in the bookstore's vending machine located near the computer lab

Student Technology Center

- Room 114 in the Addlestone Library
- High-end computers and video editing equipment
- Professional grade software
- Video Capture from VHS tapes & DVD recording

Student Technology Center

- Camcorder loans to students
- Assistance only available M - F, 8:00 to 5:00
- Contact the Student Support Desk (953-5457) or email studentcomputingsupport@cofc.edu for registration & scheduling information

Computer and Data Security

- **SECURE** laptops with lockable cables!
- **REGISTER** computers with Public Safety!
- **PROTECT** laptop and storage media from damage by using appropriate carrying cases!
- **Subscribe** to asset tracking service such as Computrace (Lojack--an optional service)

Computer and Data Security

- **YOU MUST USE ANTIVIRUS SOFTWARE!!!** Norton antivirus for PC and Mac are available free of charge
- **DOWNLOAD AND USE** anti-spyware tools
- Above items can be found on the Student Computing Support Blog (<http://blogs.cofc.edu/scs/>)

Computer and Data Security

- **DO NOT OPEN** suspicious email or attachments!
- **DO NOT REPLY** to messages asking for personal information (e.g. passwords, ID number)
- **AVOID** file-sharing services and pirated software!
- **DOWNLOAD** operating system and application software security updates!

Computer and Data Security

- **REMOVE** sensitive information & documents from printers/copiers; don't place in trash or recycle bins!
- **BEWARE** of nearby public wireless "hot spots"!
- **SAFEGUARD** flash drives by putting your name on them!
- **PROTECT YOUR DATA** by backing it up to writable CDs* or portable hard drives!

* (We recommend two copies; one to keep locally and one to send home)

Western Digital Passport



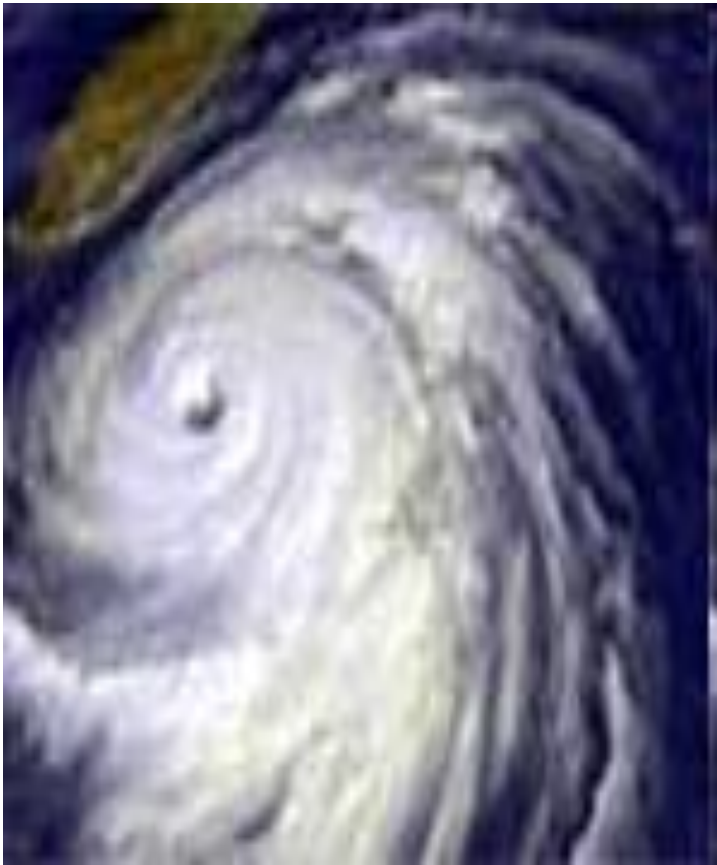
Iomega Desktop



Disaster Preparedness Guidelines

➤ Posted on the SCS blog
<http://blogs.cofc.edu/scs>

➤ Click on Security tab.



Digital Audio Recorders

Record lectures and upload them to your PC.*
Play them back for study or when reviewing for exams. Get permission to record from instructor first!

*Some recorders are not compatible with Macs



Olympus WS400S

Operating System & Accessories

- **Disk and file maintenance (defragmentation, backup, etc.)***
- **Character Map for special characters (degree sign °, math, religious symbols, etc.)***
- **System settings (speakers, keyboards, printers, mouse type/speed, etc.)***

***Applies to personally owned computers!**

Technology resources and information, including a copy of this presentation are available on the New Student Programs web page below. See Orientation Presentations and Handouts link under “Browse Orientation” on the NSP home page.

www.cofc.edu/~orientat/handouts_presentations

Computing @ The College of Charleston

computerinfo@CofC.edu

<http://blogs.cofc.edu/scs>